

Charger technology



- > High Efficiency
Charging efficiency higher than 95% meeting the requirements of energy saving and emissions reduction
- > Speediness
100% charging realized in 2 hours at the soonest
- > Compatibility
48 v / 80 v compatibility meeting the demand of different voltage levels
- > Safety
Built-in mis-connecting protection offering self isolating function under fault;
Perfect fault self checking alarm facilitating users maintenance .



(INMOTION)

Lithium battery, charger							
Lithium battery brand	ENEROC			CNSG Hong sifang		EIKTO	
	80V/542Ah	80V/606Ah	80V/750Ah <small>(dual charging ports on the right side)</small>	80V/500Ah	80V/600Ah	80V/540Ah	80V/700Ah <small>(dual charging ports on the right side)</small>
CPD40	●	○	○	○	○	○	○
CPD45/CPD50	—	●	○	—	○	—	○
Low temperature preheating of lithium battery PACK	—	●	—	—	—	—	●
Charger	D80V200ALI-123, D80V200ALI-423, D80V-400A-Li-124 (dual charger)						

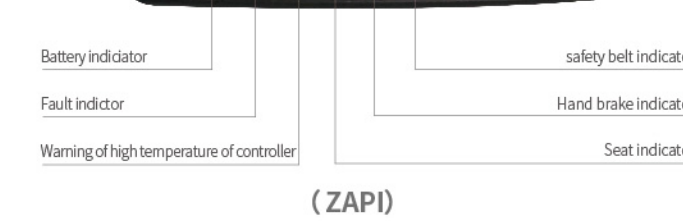
Notes: ● standard, ○ optional, — non-configurable

Standard configuration	Optional device
Standard mast	Mast with other lifting height
Standard fork	Full free lift mast
Class III standard carrier	Side shifter(hook-on)
Two-spools valve	Other attachments
Lithium battery	Fork with other length
Full suspension seat	Non-Marking tire
Overhead guard	Cab
Solid tyres	Left and right rearview mirror
Traction pin	Rear work light
LED signal light, LED warning light(flashing)	Rotating warning light, voice buzzer
USB interface	Blue warning light
Automatic steering slow down device	80V/750Ah lithium battery
Colour screen instrument (INMOTION)	Double charging socket
GRAPHIC Display(ZAPI)	HELI smart fleet management system

* Details of specifications and equipment are based on information available at time of printing and may change without notice.

HELI AMERICA INC
 ADD: 4025 Welcome All Road, Suite 150 Atlanta, GA30349, U.S.A.
 E-MAIL:heli@heliforkliftamerica.com
 TEL: 404-242-3288

Reliable special designed instrument



Reliable special meter display the whole truck's working condition, fault detect and other important information completely which make the operator master the whole truck condition directly and conveniently.

8000-10000lbs [4-5t] LITON

G3 series Lithium Battery Powered Counterbalanced Forklift Truck



CHANG No.210507 F&M&P&T

www.heliforkliftamerica.com

G3 SERIES 8000-10000lbs LITON

Perfect Combination of Aesthetics and Functional Design

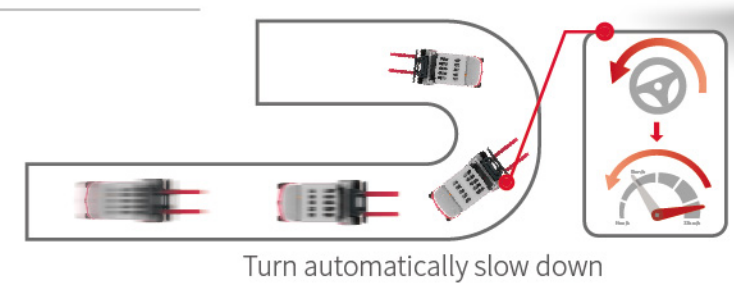
New generation with characteristics of smart, safe, high efficiency, energy saving and environment friendly

High Reliability

- High IP Protection Level of Vehicle.
- Maintenance-free integrated axle which is mature and has been tested by market is used on the truck.
- Oil-cooled wet disc type brake is free from maintenance.
- Maintenance-free AC motors are used for driving and pump motors.
- World famous controller is used.
- Large smart instrument can monitor the truck state overallly and it is safe and reliable.

High Safety

- Tail-free structure reduces the center of gravity and improves lateral stability.
- High strength and integrated type welded overhead guard improves safety.
- Side-pulling battery changing way is standard configuration and improves battery changing efficiency.
- Middle-positioned battery reduces the center of gravity and improves stability .
- High positioned rotation point of rear axle improves lateral stability of the truck.
- Automatic deceleration when steering improves working safety .
- Mast lifting buffering improves operation safety.



Suitable for working in both high and low environment

- Lithium battery is better than lead-acid battery when working between -25°C and 55°C.

Maintenance Free

- Unnecessary of fluid adding and dust proofing
- Daily maintenance free
- Manual maintenance free

Long Service Life

- Over 75% capacity reserved
- After 4000 shifts operation.
- Longer service life than lead-acid battery in equal working condition. 5 years or ten thousand hours quality guarantee for high performance lithium battery assembly.

High Efficiency and Energy Saving

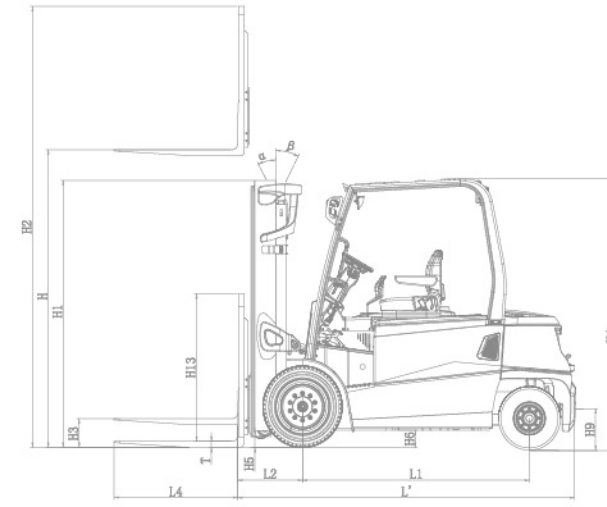
- 2-3 hours charging meet 6-8 hours working demand.
- High-energy density, self discharging rate lower than 1% per month.
- 95% energy conversion rate,superior charging and discharging performance.
- Flexible to charge, easy to operate, no impact on battery life.
- Unnecessary to change battery, cost saving.

Improved man-machine comfort

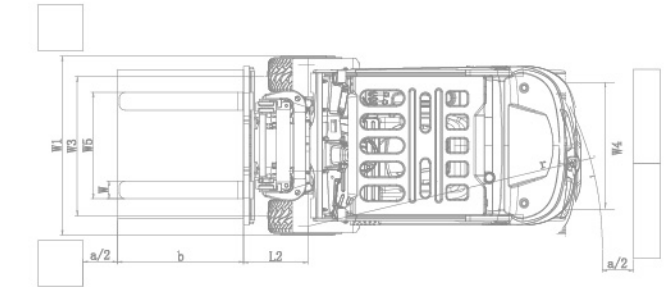
- Mast lifting and falling buffering makes operation safe and comfortable.
- The truck has lower pedal height and larger egress and ingress space.
- Suspension seat and wide view mast improve driving experience.
- Optimal battery layout and design of counterbalance improve the rear view.
- Lower layout of tilting cylinder improves the space for legs.

Manufacturer's Data and Design Characteristics

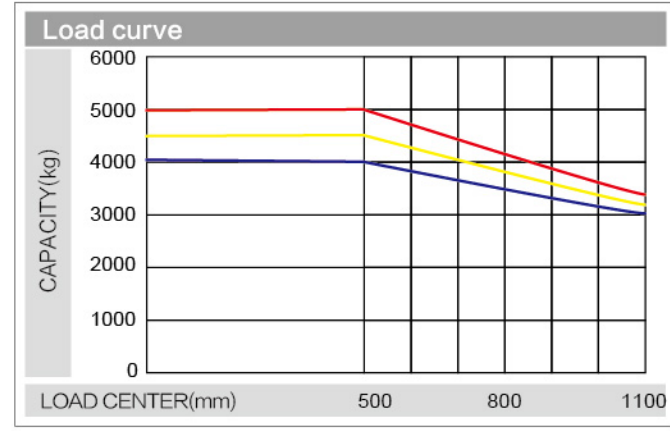
Character		HELI											
		CPD40				CPD45				CPD50			
		GB2Li											
1.01	Manufacturer	HELI											
1.02	Model	CPD40				CPD45				CPD50			
1.03	Configuration number												
1.04	Rated capacity	Q	lb	kg	8000	4000	9000	4500	10000	5000			
1.05	Load center distance	c	in	mm	24	500	24	500	24	500			
1.06	Power mode	Lithium battery											
1.07	Driving mode	Seated											
1.08	Wheel base	L1	in	mm	77.2	1960	77.2	1960	77.2	1960			
Tyre													
2.01	Tyre type	Solid tyre											
2.02	Wheel number (front/rear)	2/2											
2.03	Front wheel base	W3	in	mm	44.1	1120	44.1	1120	46.8	1189			
2.04	Rear wheel base	W4	in	mm	42.1	1070	42.1	1070	42.1	1070			
2.05	Tyre (front)	250-15				250-15				28x12.5-15			
2.06	Tyre (rear)	21X8-9				21X8-9				21x8-9			
Size													
3.01	Front overhang	L2	in	mm	22	560	22	560	22	560			
3.02	Mast tilt angle (front/rear)	α/β	°	°	8/8	8/8	8/8	8/8	8/8	8/8			
3.03	Height with mast retraction	H1	in	mm	88.2	2240	88.2	2240	87.8	2230			
3.04	Free lifting height	H3	in	mm	5.9	150	5.9	150	5.9	150			
3.05	Max.lifting height	H	in	mm	118.1	3000	118.1	3000	118.1	3000			
3.06	Max.height under working condition	H2	in	mm	166.7	4235	166.7	4235	166.3	4225			
3.07	Overhead guard height	H4	in	mm	89.6	2275	89.6	2275	89.4	2270			
3.08	Fork size: thickness×width×length	TXWXL4	in	mm	2×6×42	50×150×1070	2×6×42	50×150×1070	2×6×42	50×150×1070			
3.09	Fork arm carrier, ISO 2328, class/ type A, B	3A											
3.10	Truck body length (fork excluded)	L'	in	mm	115	2920	115	2920	115	2920			
3.11	Truck body width	W1	in	mm	53.1	1350	53.1	1350	59.1	1500			
3.12	Turning radius	r	in	mm	101.6	2580	101.6	2580	101.6	2580			
3.13	Clearance between mast and ground	H5	in	mm	5.5	140	5.5	140	5.1	130			
3.14	Clearance between wheel base center and ground (loaded)	H6	in	mm	5.7	145	5.7	145	5.3	135			
3.15	Right angle stacking aisle width (pallet1000×1000mm, clearance 200mm)	Ast	in	mm	170.9	4340	170.9	4340	170.9	4340			
3.16	Right angle stacking aisle width (pallet1200×1200mm, clearance 200mm)	Ast	in	mm	178.7	4540	178.7	4540	178.7	4540			
Performance													
4.01	Travelling speed (loaded/unloaded)		mph	km/h	8/8.7	13/14	8/8.7	13/14	8/8.7	13/14			
4.02	Lifting speed (loaded/unloaded)		fpm	mm/s	61/88.7	310/450	55.2/88.7	280/450	51.2/88.7	260/450			
4.03	Lowering speed (loaded/unloaded)		fpm	mm/s	98.5/88.7	500/450	98.5/88.7	500/450	98.5/88.7	500/450			
4.04	Gradeability (loaded/unloaded)		%	%	16/27	16/27	15/26	15/26	14/25	14/25			
4.05	Max.traction force (loaded)		N	N	21000	21000	21000	21000	21000	21000			
4.06	Acceleration time (10m)(loaded/unloaded)		s	s	6.58/6.25	6.70/6.19	6.70/6.19	6.70/6.19	6.82/6.14	6.82/6.14			
Weight													
5.01	Total weight (with/without battery)		lb	kg	14705/13415	6670/6085	15069/13558	6835/6150	15895/14385	7210/6525			
5.02	Axle load (unloaded front/rear)		lb	kg	7044/7727	3195/3505	7088/7981	3215/3620	7374/8521	3345/3865			
5.03	Axle load (loaded front/rear)		lb	kg	20757/2888	9415/1310	22487/2502	10200/1135	24713/2282	11210/1035			
Battery													
6.01	Battery voltage/capacity		V/Ah	V/Ah	80/542	80/606	80/606	80/606	80/606	80/606			
6.02	Battery weight		lb	kg	1290	585	1510	685	1510	685			
Motor and controller													
7.01	Drive motor power(S2-60min)		HP	KW	26.8	20	26.8	20	26.8	20			
7.02	Lifting motor power(S3-15%)		HP	KW	35.5	26.5	35.5	26.5	35.5	26.5			
7.03	Steering motor power(S3-15%)		HP	KW	3.4	2.5	3.4	2.5	3.4	2.5			
7.04	Drive motor controlling mode		MOSFET/AC										
7.05	Lifting motor controlling mode		MOSFET/AC										
7.06	Steering motor controlling mode		MOSFET/AC										
Others													
8.01	Service brake/parking brake		Hydraulic/mechanical										
8.02	Hydraulic system working pressure		PSI	Mpa	2939	20	2939	20	3160	21.5			
8.03	Type of drive control		ZAPI										



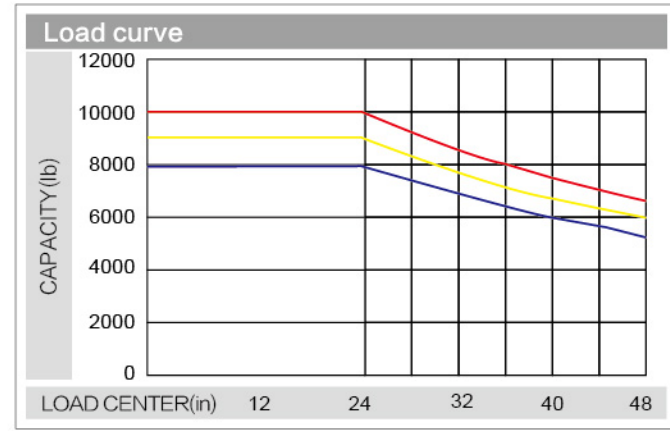
Ast: Right angle stacking aisle width a: Clearance,200mm



CPD40-GB2Li CPD45-GB2Li CPD50-GB2Li



CPD40-GB2Li CPD45-GB2Li CPD50-GB2Li



Note: The vertical axis stands for load capacity and the horizontal axis stands for load center which is calculated from the front surface of the forks to the gravity of the standard load. the standard load means a cubic with 1000mm (48in) edge length. When mast is tilted forward, using non-standard forks or loading large goods, the load capacity will be reduced. The load capacity of standard mast at different load center can be known from this load chart.

HELI smart fleet management system (Optional)

- Vehicle positioning
- Remote diagnosis
- Remote monitoring
- Maintenance reminder
- Battery management
- Statistical form
- Vehicle management
- Identification recognition (optional)
- Weight management (optional)
- Collision management (optional)



WIDE VIEW MAST

Mast model	Max. lifting height	Load capacity (load center 24 inch)			Mast overall height (Fork to the ground)		Free lift	Service weight			Mast tilt angle
		CPD40	CPD45	CPD50	Mast lowered	Fork lifted (with backrest)		CPD40	CPD45	CPD50	
M250	98/2500	8000/3629	9000/4082	10000/4536	78/1980	147/3733	6/150	14584/6615	14947/6780	15774/7155	8-8°
M300	118/3000	8000/3629	9000/4082	10000/4536	88/2230	167/4233	6/150	14705/6670	15069/6835	15895/7210	8-8°
M330	130/3300	8000/3629	9000/4082	10000/4536	94/2380	178/4533	6/150	14771/6700	15135/6865	15961/7240	8-8°
M350	138/3500	8000/3629	9000/4082	10000/4536	98/2480	186/4733	6/150	14815/6720	15179/6885	16006/7260	8-8°
M370	146/3700	8000/3629	8900/4037	9800/4445	102/2580	194/4933	6/150	14870/6745	15234/6910	16061/7285	8-8°
M400	157/4000	8000/3629	8700/3946	9500/4309	109/2780	206/5233	6/150	14958/6785	15322/6950	16149/7325	8-8°
M425	167/4250	8000/3629	8500/3856	9350/4241	114/2905	216/5483	6/150	15013/6810	15377/6975	16204/7350	8-8°
M450	177/4500	8000/3629	8300/3765	9000/4082	119/3030	226/5733	6/150	15080/6840	15443/7005	16270/7380	8-8°
M475	187/4750	7800/3538	8200/3719	8800/3992	124/3155	236/5983	6/150	15135/6865	15498/7030	16325/7405	8-8°
M500	197/5000	7600/3447	8000/3629	8600/3901	129/3280	245/6233	6/150	15201/6895	15565/7060	16391/7435	8-8°
M550	217/5500	7300/3311	7600/3447	8300/3765	141/3580	265/6733	6/150	15333/6955	15697/7120	16524/7495	6-5°
M600	236/6000	6800/3084	6900/3130	7700/3493	151/3830	285/7233	6/150	15454/7010	15818/7175	16645/7550	6-5°

WIDE VIEW FULL FREE 2-STAGE MAST

Mast model	Max. lifting height	Load capacity (load center 24 inch)			Mast overall height (Fork to the ground)		Free lift	Service weight			Mast tilt angle
		CPD40	CPD45	CPD50	Mast lowered	Fork lifted (with backrest)		CPD40	CPD45	CPD50	
ZM250	98/2500	8000/3629	9000/4082	10000/4536	78/1980	147/3733	31/777	14793/6710	15157/6875	15984/7250	8-8°
ZM261	103/2610	8000/3629	9000/4082	10000/4536	80/2035	149/3792	33/832	14815/6720	15179/6885	16006/7260	8-8°
ZM300	118/3000	8000/3629	9000/4082	10000/4536	88/2230	167/4233	40/1027	14925/6770	15289/6935	16116/7310	8-8°
ZM330	130/3300	8000/3629	9000/4082	10000/4536	94/2380	178/4533	46/1177	14998/6803	15362/6968	16189/7343	8-8°
ZM350	138/3500	8000/3629	9000/4082	9800/4445	98/2480	186/4733	50/1277	15064/6833	15428/6998	16255/7373	8-8°
ZM370	146/3700	8000/3629	8800/3992	9600/4354	102/2580	194/4933	54/1377	15135/6865	15498/7030	16325/7405	8-8°
ZM400	157/4000	8000/3629	8600/3901	9300/4218	109/2780	206/5233	62/1577	15245/6915	15609/7080	16435/7455	8-8°
ZM425	167/4250	8000/3629	8400/3810	9100/4128	114/2905	216/5483	67/1702	15311/6945	15675/7110	16502/7485	8-8°
ZM450	177/4500	7900/3583	8200/3719	8800/3992	119/3030	226/5733	72/1827	15395/6983	15759/7148	16585/7523	8-8°
ZM475	187/4750	7700/3493	8100/3674	8700/3946	124/3155	236/5983	77/1952	15465/7015	15829/7180	16656/7555	8-8°
ZM500	197/5000	7500/3402	7900/3583	8500/3856	129/3280	245/6233	82/2077	15543/7050	15906/7215	16733/7590	8-8°
ZM550	217/5500	7200/3266	7500/3402	8200/3719	141/3580	265/6733	94/2377	15686/7115	16050/7280	16876/7655	6-5°
ZM600	236/6000	6700/3039	6800/3084	7600/3447	151/3830	285/7233	103/2627	15807/7170	16171/7335	16998/7710	6-5°

Free lift without backrest will increase by 271mm(10.7in) .

WIDE VIEW FULL FREE 3-STAGE MAST

Mast model	Max. lifting height	Load capacity (load center 24 inch)			Mast overall height (Fork to the ground)		Free lift	Service weight			Mast tilt angle
		CPD40	CPD45	CPD50	Mast lowered	Fork lifted (with backrest)		CPD40	CPD45	CPD50	
ZSM360	142/3600	8000/3629	8700/3946	9800/4445	76/1930	190/4833	29/727	15245/6915	15609/7080	16435/7455	8-8°
ZSM400	157/4000	7900/3583	8400/3810	9500/4309	81/2070	206/5233	34/867	15355/6965	15719/7130	16546/7505	8-8°
ZSM435	171/4350	7700/3493	8100/3674	8900/4037	86/2180	220/5583	38/977	15421/6995	15785/7160	16612/7535	8-8°
ZSM450	177/4500	7600/3447	8000/3629	8800/3992	88/2230	226/5733	40/1027	15465/7015	15829/7180	16656/7555	8-8°
ZSM470	189/4800</										