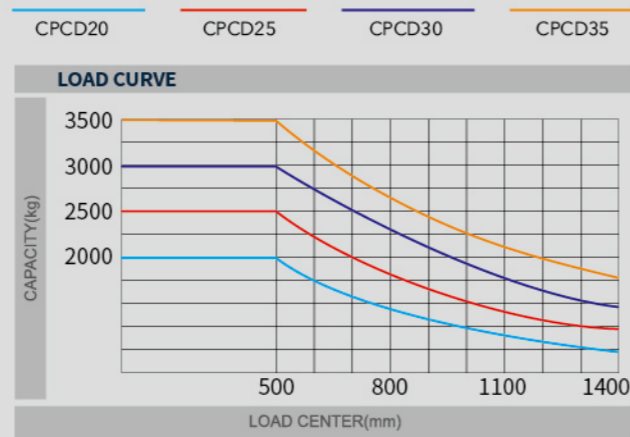
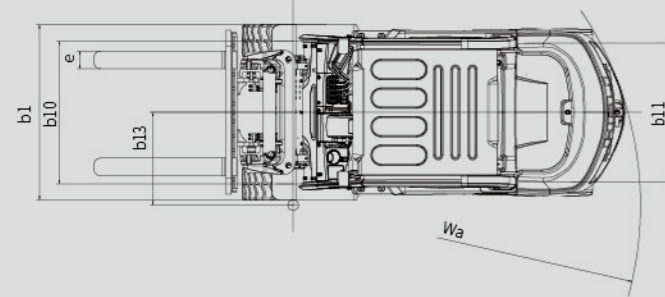


NOTE:
Vertical axle stands for load capacity while horizontal axle stands for load center. Load center is the distance counted from the front of the fork. The base point of the standard load is the center point of the cubic with the same 1200mm dimension in length, width and height. The load capacity should be down, if mast tilts forward, using non-standard forks or loading goods with extra width. Please notice the different load capacity between different load centers according to load chart.



CPCD 20/25/30/35
M3G3/KU17G3
CP(Q)YD 20/25/30/35
KU1G3



Product range of Heli: 1-4t internal combustion forklift truck; 0.6-18 tons electric forklift truck; reach truck, pallet truck, stacker and other warehousing products; AGV and system solutions; reach stacker, container handler, tractor, explosion-proof forklift truck, rough terrain forklift truck, loader and other diversified products.



ANHUI HELI CO., LTD.

Add / No.668, FangXing Road, Hefei, China
 Fax / +86-551-63639966
 Tel / +86-551-63639068(America); 63639258(Europe); 63639358(Asia);
 63662105(Africa & Middle East); 63639530(Overseas Marketing)



LinkedIn



YouTube



Facebook

* Our products are subject to improvements and changes without notice.

2-3.5 t
G3 series Internal Combustion
Counterbalanced Forklift Truck

AESTHETICS FUNCTIONAL

A Design Of Perfect Combination

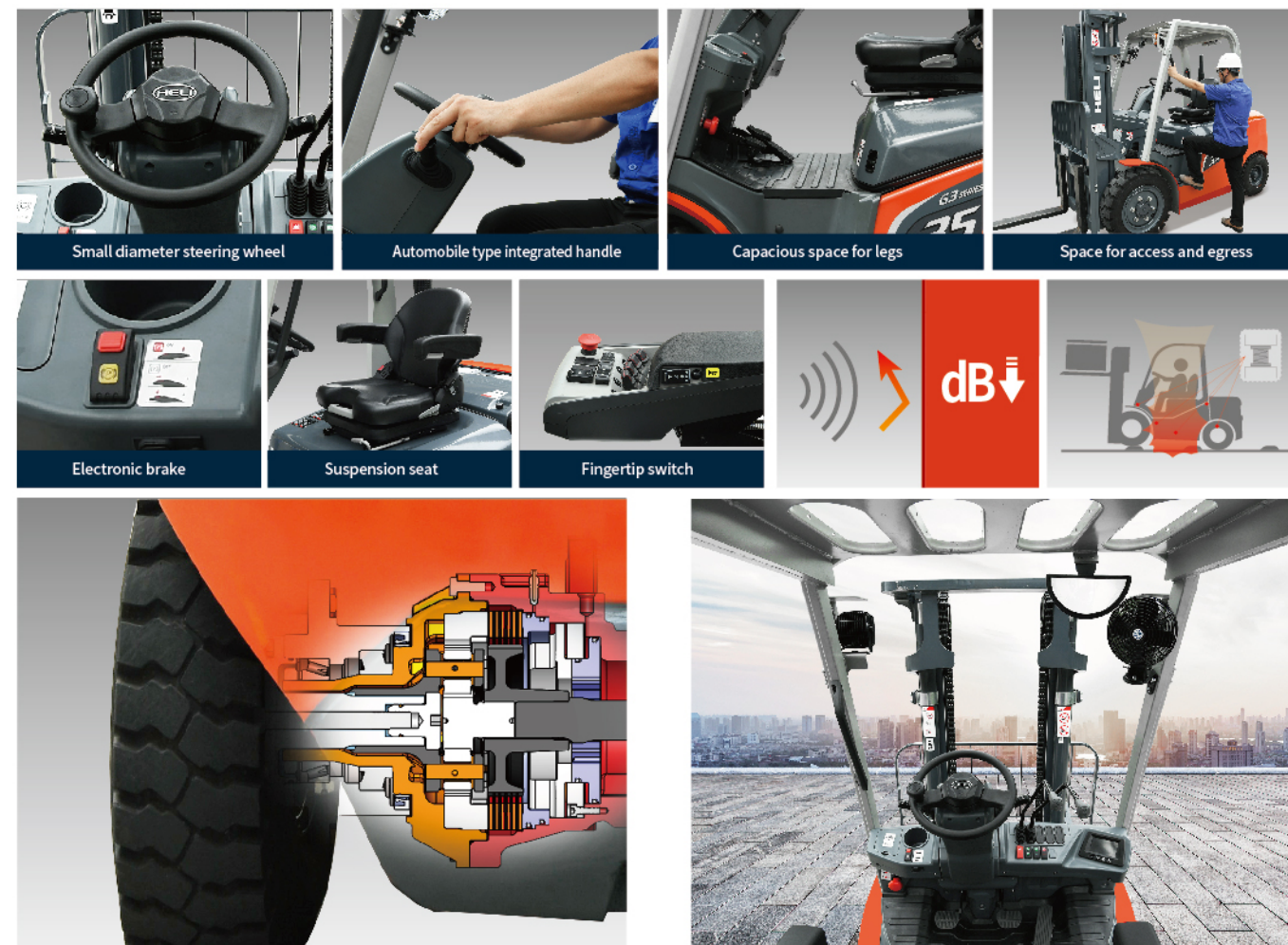


A NEW GENERATION OF PRODUCTS

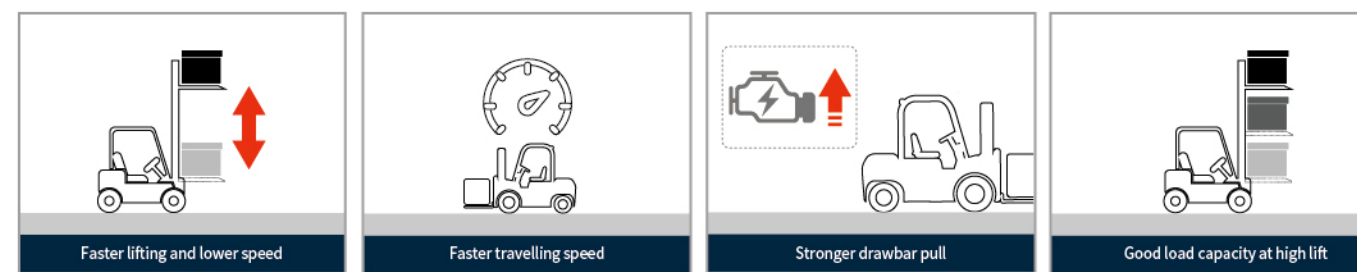
Intelligent / Safe / Efficient / Saving and Environment Friendly

IMPROVED COMFORT

The image of the whole vehicle is fully upgraded, adopting Heli's brand-new family-based PI features, with both appearance and connotation. The Chinese "bronze tripod" shape shows the deep foundation of the enterprise. Heli contributes to the society with high-quality products which have innovational color matching, fashionable and unique characteristics. There is a high degree of brand recognition.



UPGRADED EFFICIENCY



SAFETY GUARANTEED

- Configuring the enhanced OPS control system . When the driver leaves the seat, travelling and the lifting and lowering functions of the mast are locked, effectively ensuring the driver's safety;
- The efficient and reliable parking brake system makes parking safer and more reliable;
- Customized speed control system meet the personalized needs; (optional)
- The truck is equipped with the function of preventing starting with gear and preventing the secondary ignition of engine, and the safety guarantee is upgraded;
- The intelligent instrument can comprehensively monitor the status of the whole truck. realize starting with card or password and maintenance information reminding, and more efficient or flexible truck management can be realized through matching with HELI professional fleet management system;
- The truck is equipped with integral cab which upgrades safety protection.



RELIABLE SPECIAL DESIGNED INSTRUMENT



1. Colorful LCD display screen with high resolution; adjustable backlight brightness.
2. CAN bus meter to read the fault code directly; (only electronic controlled engine).
3. Front and rear protection degree: IP 66.
4. Working temperature: -30°C~+75°C; temperature for storage: -40°C~+85°C.
5. Multi-level programmable menu.
6. More than 20 alarm indicators and 6 simulation indicators can monitor engine and trucks at the same time to protect operator and truck safety.
7. Alarm according to different grade: there are two alarm grade: the indicator will flicker for the first grade alarm and the buzzer will sound up for the second grade alarm.
8. Chinese and English are optional.
9. Point check.
10. Identity recognition (optional); Starting through card or password (optional).
11. GPS (optional).

	Engine coolant temperature		Charging indication		Left turning		Oil and water separator
	Fuel level		Block of air cleaner		Right turning		High temperature exhausting
	Oil temperature of drive axle		Hand brake		Alarm of low fuel		DPF parking regeneration request
	LPG pressure		Seat switch		Alarm of engine oil pressure		Forcible no generation of DPF
	Low brake pressure		Neutral indicator		Preheating indication		Fault of fingertip control
	Engine alarm		Safety belt switch		Hourmeter		

HELI smart fleet management system (optional)

Vehicle positioning	Statistical form
Remote diagnosis	Vehicle management
Remote monitoring	Identification recognition (optional)
Maintenance reminder	Weight management (optional)
Battery management	Collision management (optional)



